

BisCem[®] Self-Adhesive Resin Cement



BisCem is a cost effective self-adhesive resin cement designed to bond to a multitude of substrates, including metals, composites, porcelain and amalgam. BisCem does not require etching, priming or bonding of the prepared surface. It is available in two shades, TRANSLUCENT and OPAQUE, for a simplified system that meets the needs of a wide variety of restorative options.

UNIQUE BENEFITS

- A dual-cured self-adhesive cement formulated for excellent handling properties and easy clean-up
- Radiopaque material is easily identified on radiographs
- Low film thickness ensures the restoration is completely seated
- Glass Ionomer benefits with resin cement strength

CLINICAL SIGNIFICANCE

- No etching, priming or bonding saves time by reducing clinical steps
- The auto-mix dual-syringe delivery requires no hand mixing allowing dispensing directly into the restoration

SAVE WITH BisCem

On average BisCem is priced 34% less than leading competitors. BisCem is an economical solution for your practice without sacrificing clinical performance.

BisCem	\$11.50/g
RelyX™ Unicem Automix	\$17.21/g
Maxcem Elite™	\$14.50/g
G-Cem™ LinkAce	\$14.67/g

Pricing is based on independent distributor average retail list price.

PHYSICAL PROPERTIES

Data on file. BISCO, Inc.

% Filled (Weight/Volume)	Average Particle Size	Film Thickness	Diametral Tensile Strength	Compressive Strength	Flexural Strength
Base: 60/36 Catalyst: 62/40	Base: 1.0µm Catalyst: 3.5µm	22µm	34 MPa	212 MPa	42 MPa



ORDER DIRECT FROM BISCO

800-247-3368 • 847-534-6000

www.bisco.com

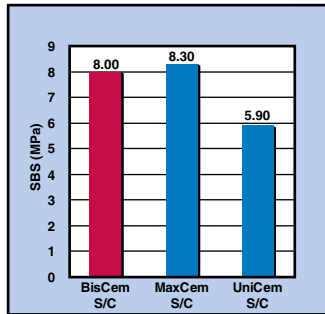
RX Only



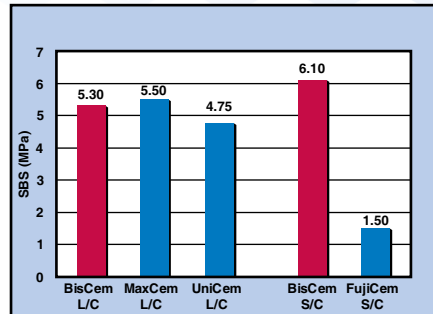
MC-3153BBC

BisCem

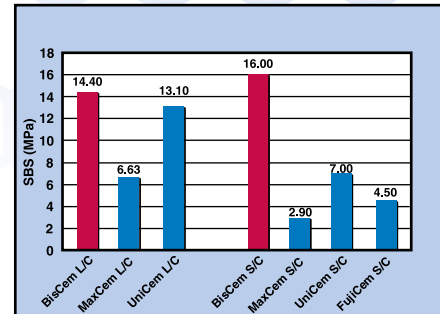
Self-Adhesive Resin Cement



Bonding to Metal Option*



Bonding to Dentin*



Bonding to Composite*

*Data on file, Bisco, Inc.

ORDERING INFORMATION

KIT CONTENTS

- 1 DUAL-SYRINGE PACKAGE
- 1 Dual-Syringe (8g), 15 Mixing Tips and Intraoral Tips, Instructions/MSDS

TRANSLUCENT
OPAQUE

D-45011P
D-45012P

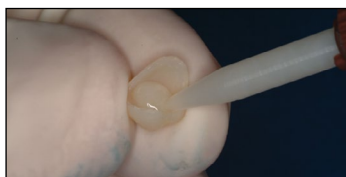
ACCESSORIES

1 Dual-Syringe Dispenser	L-22020P
5 Large Mixing Pads (2 3/8" x 2 3/8")	X-80485B
Disposable Spatulas (72)	X-80486B
Dual-Syringe Static Mixing Tip Refills (30)	X-81252P
Dual-Syringe Mixing Tips and Intraoral Tips (30)	X-81257P
Dual-Syringe Mixing Tips and Root Canal Tips (30)	X-81267P

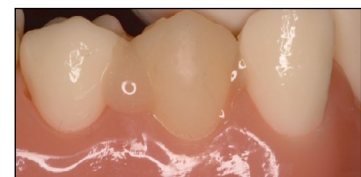
TECHNIQUE FOR CROWN PLACEMENT



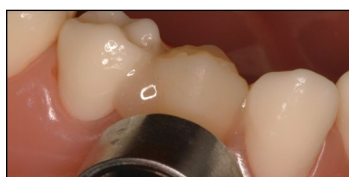
1. Remove temporary restoration and residual cement.



2. Fill restoration with BisCem.



3. Seat the restoration.



4. Light cure for 3-5 seconds, to aid in cement removal.



5. Remove excess cement.



6. Light cure for 20-30 seconds.