

INTRAORAL REPAIR KIT

Repair of Porcelain-Fused-to-Metal or Zirconia/Alumina Restorations

1

Isolate the area to be repaired. Remove the glaze and bevel (45 degrees) the porcelain around the area to be repaired. Sandblast or abrade with a coarse diamond bur. Rinse with water and air dry.

2



Place **Barrier Gel** on the gingival tissue and porcelain to protect areas where etching is not desired.

3



Apply **9.5% Porcelain Etchant** to the dry porcelain surface for 90 seconds. Suction the etchant with high volume evacuation, then rinse with water and air dry. The etched porcelain should appear dull and frosty.

4



Clean the etched porcelain with **Uni-Etch® w/ BAC** or **Select HV® w/BAC** and agitate for 20 seconds to remove any salts. Rinse and dry thoroughly.

5



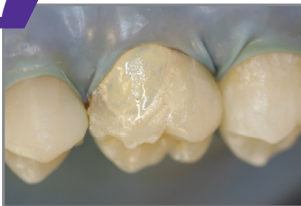
Apply 1 coat of silane (**Porcelain Primer** or **Bis-Silane™**) to the etched porcelain and allow to dwell for 30 seconds. Dry with (warm) air syringe.

6



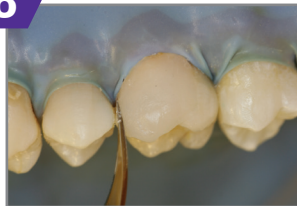
Apply 1 coat of **Z-Prime™ Plus** to the exposed metal/zirconia/alumina and dry with an air syringe for 3-5 seconds.

7



If metal masking is required, dispense one drop each of **Catalyst & Base** onto a mixing pad and mix with a brush tip. Apply a thin coat of **Opaquer** only to the metal surface. Allow to self cure, or light cure for 5 seconds.

8



Apply a thick layer of **Porcelain Bonding Resin** to the repair site. Spread a hybrid composite (**Aelite™ All-Purpose Body**) evenly over the surface and light cure, finish/polish.


9



Place **Bis-Cover™ LV** to seal and glaze the composite.



Rx Only

 BISCO, Inc. • 1100 W. Irving Park Road • Schaumburg, IL 60193 • U.S.A. • 1-847-534-6000 • www.bisco.com

 BISICO France • 208, allée de la Coudoulette • 13680 Lançon de Provence • France • 33-4-90-42-92-92



MC-4009IR