

# TheraCal PT<sup>®</sup>

PULPOTOMIES. THE THERA WAY.



Rx Only



# TheraCal PT<sup>®</sup>

Dual-Cured Resin Modified Calcium Silicate Pulpotomy Treatment

## Pulpotomies the THERA way...

TheraCal PT is a biocompatible, dual-cured, resin-modified calcium silicate that is used to treat exposed pulp. TheraCal PT maintains tooth vitality by performing as a barrier and protectant of the dental pulpal complex.

TheraCal PT's calcium release properties and ability to generate an alkaline pH is optimal for use in deep cavity preparations. The dual-cure ability permits immediate placement of the restorative material.

### TheraCal PT is primarily indicated for:

- **Pulpotomies:** TheraCal PT may be placed after the partial or full removal of the coronal pulp.

### TheraCal PT can also be used for:

- **Pulp exposures** (direct pulp capping): TheraCal PT may be placed directly on pulp exposures after hemostasis is obtained.
- **Protective liner** (indirect pulp capping) or base under a variety of substrates.



**Working Time:**  
45 seconds at 35°C  
(minimum)



**Setting Time:**  
5 minutes at 35°C  
(maximum)



**Time Saver:**  
Restore in 1  
office visit



**UNIQUE  
HYDROPHILIC  
MATRIX**



**Thera Benefits**



The chemical formulation of TheraCal PT consists of synthetic Portland Cement calcium silicate particles in a hydrophilic matrix which facilitates **calcium release**.



TheraCal PT's **physical properties** resist breakdown and degradation leading to a durable seal.\*



**Alkaline pH**  
Alkaline pH promotes pulp vitality.<sup>1</sup>

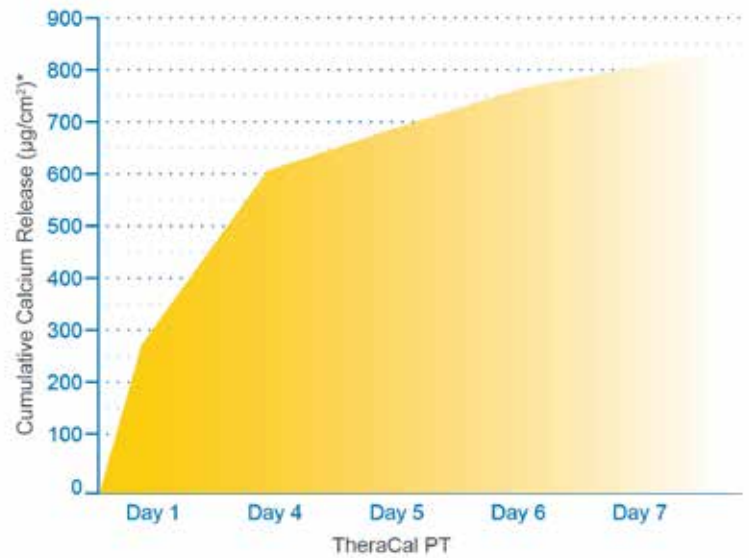


**Moisture tolerant**  
Low water solubility.\*



**Easy Syringe Application**  
Unlike traditional MTA products, there is no mixing by hand. Easily and directly dispense TheraCal PT from the dual-barrel auto-mix syringe.

**Cumulative Calcium Release**

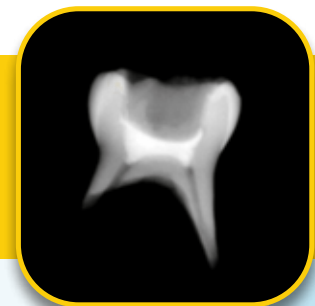


<sup>1</sup> T. Okabe, M. Sakamoto, H. Takeuchi, K. Matsushima. Effects of pH on Mineralization Ability of Human Dental Pulp Cells. Journal of Endodontics, Volume 32, Number 3, March 2006.

\* Data on file.



**Radiopacity**  
TheraCal PT is radiopaque, allowing for easy identification and differentiation from recurrent decay and other restorative materials.

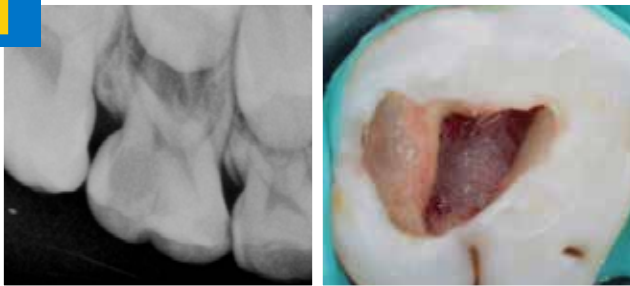


# Pulpotomy Case

Pulpotomy with TheraCal PT in a primary molar

Dentistry courtesy of  
Dr. Juan Carlos Hernández Cabanillas

1



X-Ray of radiographic diagnosis of pulpitis

Removal of coronal pulp and hemorrhage control

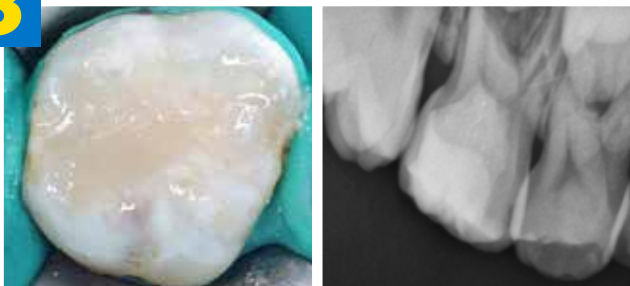
2



Application of TheraCal PT in the pulpal chamber

Polymerized TheraCal PT

3



Final composite restoration and post-operative radiograph

4



90-day clinical follow-up and radiograph

## Ordering Information

**TheraCal PT Single Syringe Pack** ..... **H-34110P**  
1 Automix 4g Syringe TheraCal PT , Accessories, Instructions

**TheraCal PT Dispensing Tips (30)**..... **X-81270P**

1-800-247-3368



MC-2636PT



www.bisco.com